

# Sprint™ & Stroller®

Liquid Oxygen Portables



## Freedom to Move

Peacefully stroll along the beach, comfortably shop, or easily visit loved ones with CAIRE's Sprint or Stroller, which combine high oxygen flow rates with ultra light weight units. The continuous flow option allows users the ability to stay on the move, no matter their required flow. The ergonomic curve allows the units to rest comfortably against the body. Patients can stay active with CAIRE's quiet, user-friendly liquid oxygen portables.



### LIGHTWEIGHT & LONG-LASTING

- Ultra-lightweight Sprint provides maximum mobility with minimum weight, as just 6.0 lb (2,72 kg) filled
- Continuous flow options up to 6 LPM on the Stroller
- Stroller weighs only 8.0 lb (3,63 kg)
- Increased ease of mobility



### EASE OF USE

- The LED meter is simple to read
- End users can quickly perform fill operations
- Contoured design for ergonomic fit to body
- Soft case for extra comfort



### VERSATILITY

- Side and top fill configurations available
- Scale and LED liquid level gauge options
- All popular connectors available to allow utilization of existing liquid systems
- Backpack and cart accessories available



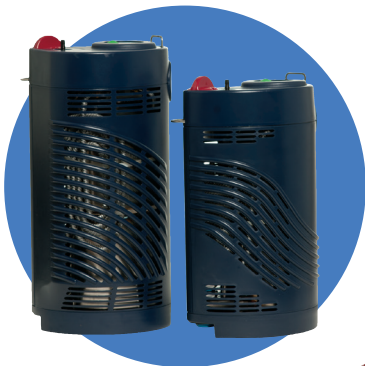
CAIRE has the widest range of oxygen products available, with options available to meet each patient's prescription and mobility needs. Visit [www.caireinc.com](http://www.caireinc.com) to learn about on-demand and high-flow portable LOX units and our portable, transportable and stationary oxygen concentrators.

# Sprint™ & Stroller®

Liquid Oxygen Portables

## Product Specifications

	Sprint	Stroller
LOX Capacity	1.5 lb (0,68 kg)	3.0 lb (1,36 kg)
Gaseous Equivalent Capacity	513 L	1026 L
Weight, Empty	4.5 lb (2,04 kg)	5.0 lb (2,27 kg)
Weight, Filled	6.0 lb (2,72 kg)	8.0 lb (3,63 kg)
Height	11.75 in. (298 mm)	13.5 in. (343 mm)
Typical use time at 2 LPM	4.3 hours	8.5 hours
Operating Pressure	20 psi (137 kPa)	20 psi (137 kPa)
Normal Evaporation Rate	1.3 lb/day (0,57 kg/day)	1.3 lb/ day (0,57 kg/day)
Standard Flow Control Range	Off, .25, .5, .75, 1, 1.5, 2, 2.5, 3, 4, 5, 6 LPM	Off, .25, .5, .75, 1, 1.5, 2, 2.5, 3, 4, 5, 6 LPM



Stroller, Sprint



Soft Case Stroller

## Ordering Information\*

Description	Catalog Number
Sprint SF (side fill)	15103150
Sprint TF (top fill)	10956671
Stroller SF (side fill) LED	10845200
Stroller TF (top fill) LED	10956680
Stroller TF (top fill) LED soft case	14768264
Stroller SF (side fill) Scale	14909784
Stroller TF (top fill) Scale	12993791
Stroller TF (top fill) Scale soft case	14765549

\* Catalog Numbers reflect US English Part Numbers; for language-specific part numbers, please contact Customer Service



**CAIRE Contact Information:**  
 Providers Toll Free  
 1.800.482.2473  
[www.caireinc.com](http://www.caireinc.com)

SEE PRODUCT WARRANTY STATEMENT FOR COMPLETE INFORMATION. Please consult the applicable product instructions for use for product indications, contraindications, warnings, precautions, and detailed safety information.