

Choice of the breathing system



Connect the breathing system to the patient circuit port.

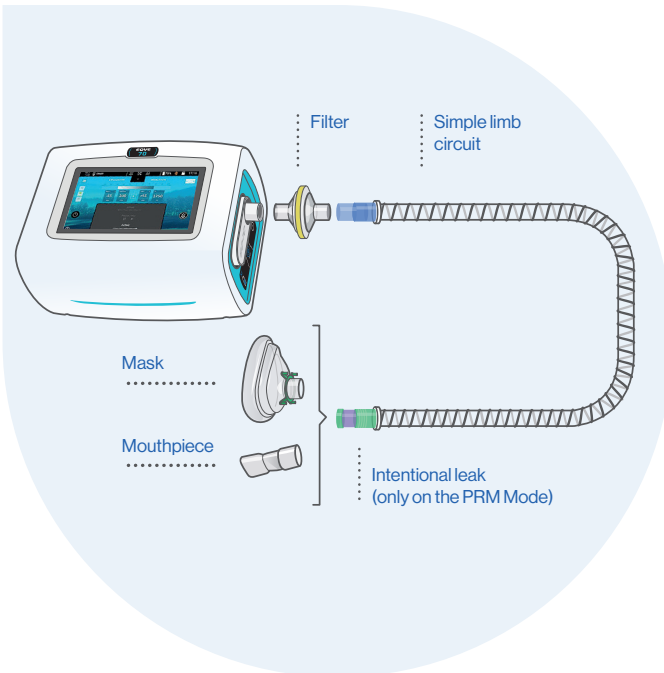
INEX Mode: Simple limb circuit **without leak**



PRM Mode: Simple limb circuit with **intentional leaks**



Breathing system assembly



Contact

EOVE
Helioparc - 4 Bd Lucien Favre
64000 Pau France
+33 (0)5 59 21 86 84



www.eove.fr

MOVE AND CARE CONCEPT BY | EOVE-70

EOVE

EOVE 70

Quick Guide



05/2019 - Photocredit: © Air Liquide - Design and illustration: CHANH THI

The guide do not replace
the user manual

For people knowing
the setting

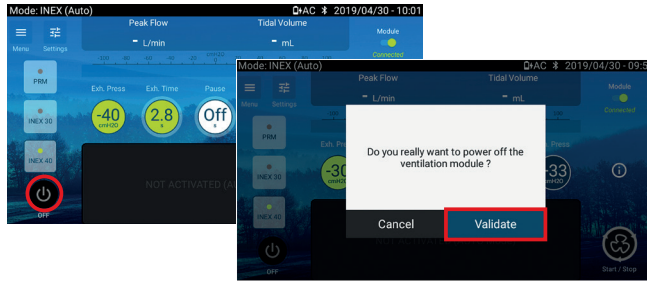
MOVE AND CARE CONCEPT BY
EOVE

Turn on the EOVE-70

Press on

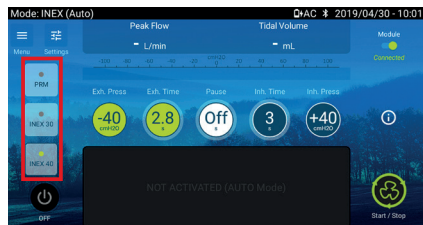


Switch off the device



Long push on  + Validate

Manage the treatment



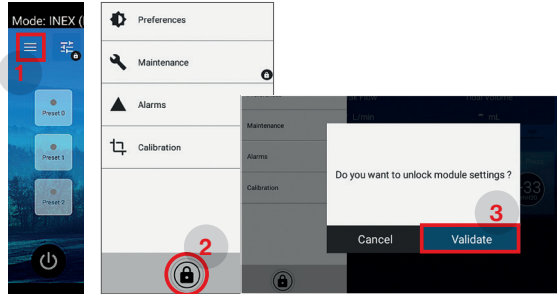
Select the preset

Start the session: push on
Stop the session: push on



INEX manual mode: move your finger on the touch screen (from the right to the left)

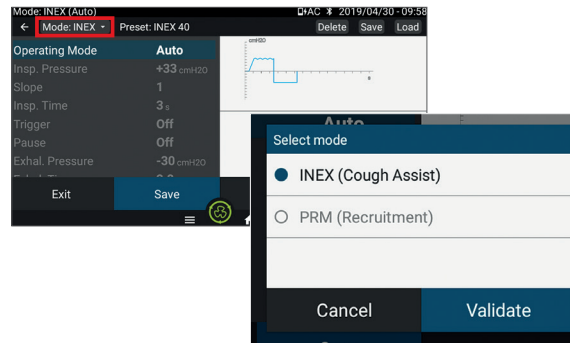
Unlock the clinical mode



Push on the “menu” button, then, unlock clinical mode and Validate

Treatment settings

Push on the button “Settings”, then, choose the treatment mode



Choose your settings (selection, settings, validation)



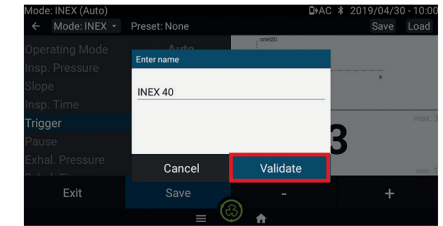
Push on “Save” to memorize the settings

Save a preset

During the step “Treatment settings”, push on Validate

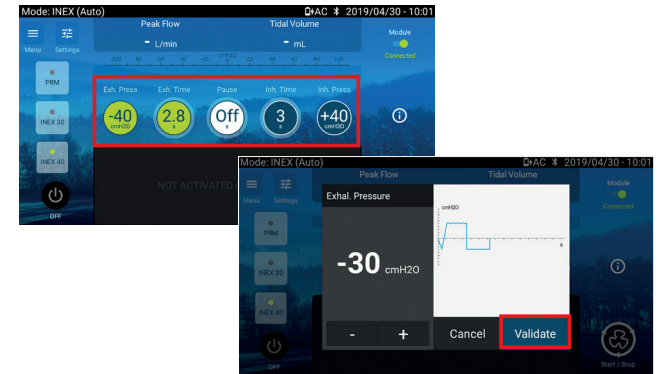


Choose the preset place, personalize the name and then, Validation



Modification of the current settings

Push on the setting you want to modify, adjust it, and Validation



Breathing system calibration

Execute the calibration from the clinical menu following the instructions. Then, Validation and come back to the home screen.

